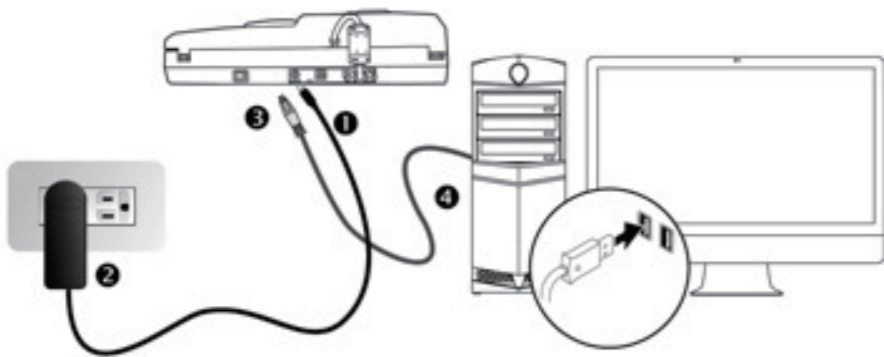


Quick Installation Guide

Step 1 Connecting

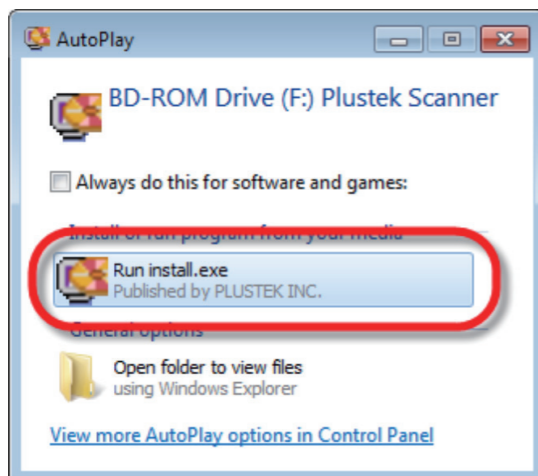
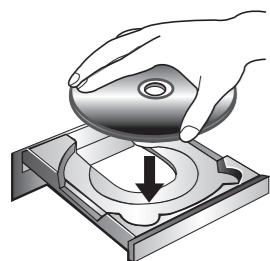
Connecting the scanner to your computer



*Please use the AC adapter provided with the scanner.

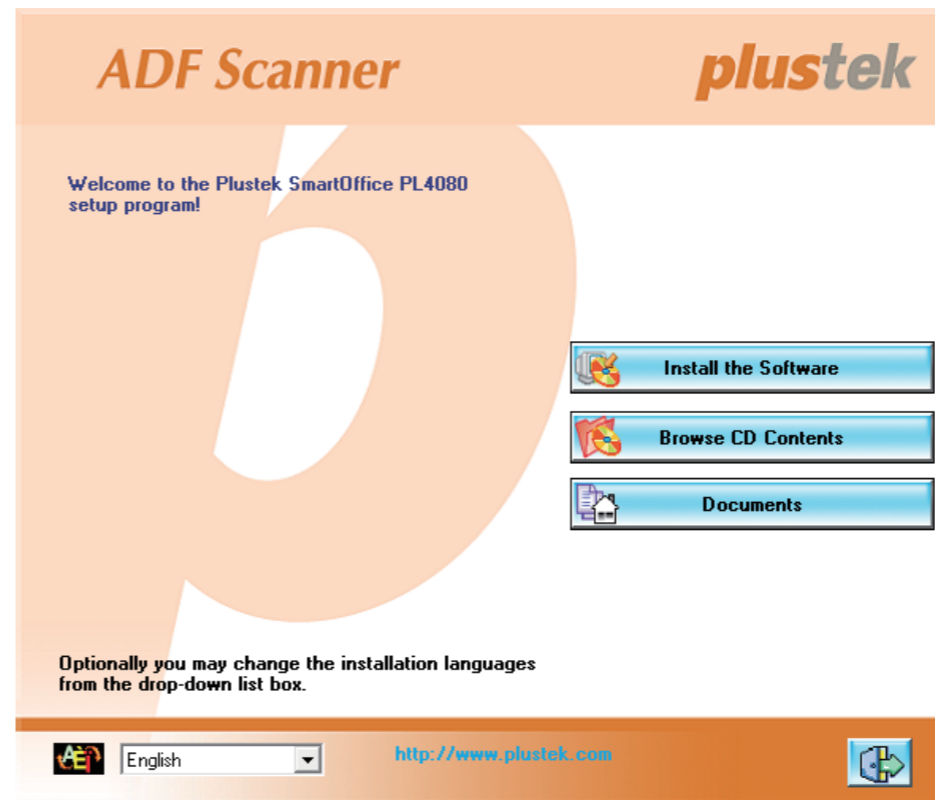
Step 2 Installing

- Do one of the following to install the scanner driver:
- Insert the Setup/Application Disc, included with your scanner, into your DVD-ROM drive.
 - Download the latest driver from our official website: <https://www.plustek.com/pl4080>



Installing the software on Windows OS

Follow the on-screen instructions to install all software:



Scanner Connection

Check the icon located on the Windows system tray:

Appearance	Status
	The program has been successfully launched, the scanner is connected with the computer and the scanner connection is activated, ready to scan images.
	The scanner is not connected with the computer or the scanner power is not switched on. Or, the scanner is in standby mode.
No Display	You have chosen to terminate the program, no matter the scanner is connected or disconnected with the computer.

LED Indicator

Indicates the scanner status.

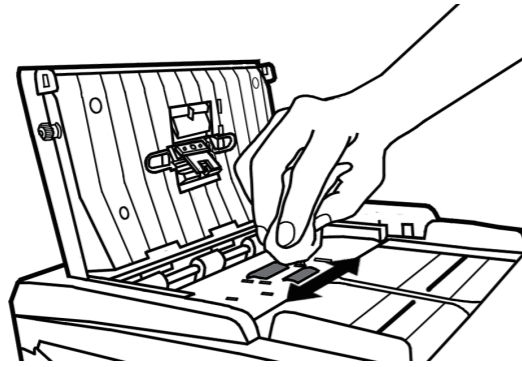
Light	Status
Blue	The scanner is turned on, ready to scan images.
Orange	The scanner is in standby mode if it is idle for 10 minutes.
Off	The scanner is off, either because the power is not turned on, or because the AC adapter is not properly plugged into an AC power outlet.

FAQ

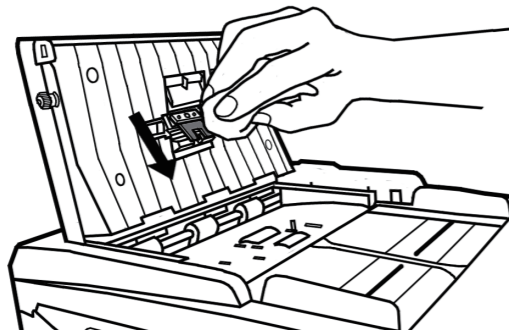
1. Cleaning the ADF

If you encounter paper-feeding issue, please clean the ADF as following:

- Clean the Feed Roller:

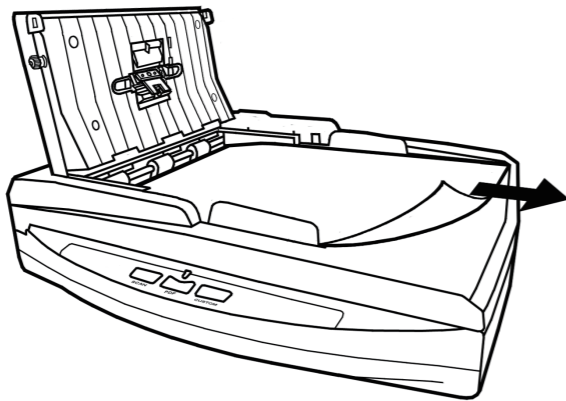


- Clean the Pad Module:



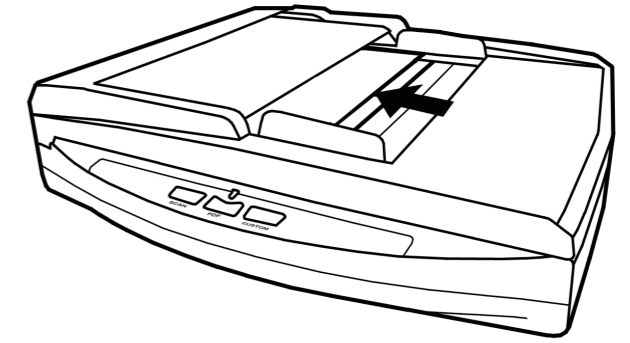
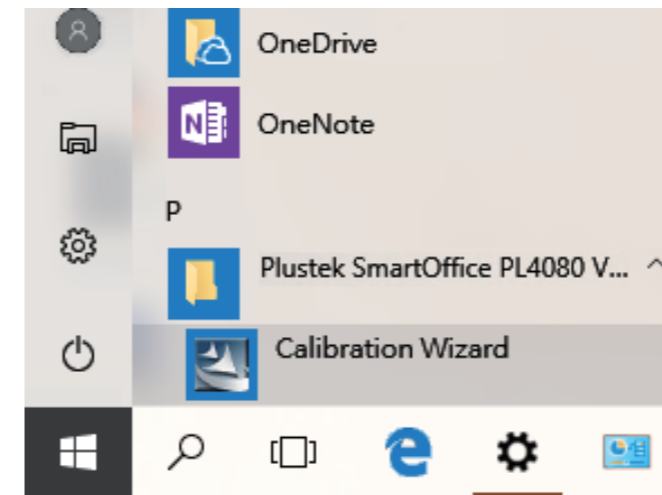
2. Clearing Paper Jams

If a paper jam in the ADF happens, please open the ADF cover, gently but firmly pull the jammed documents out of the ADF, then close the ADF cover.



3. Calibrating the scanner

If you encounter color issue, please find **Calibration Wizard** as following:



Click **Next**, then click **Calibrate Now**. Follow the on-screen instructions to complete the calibration.

